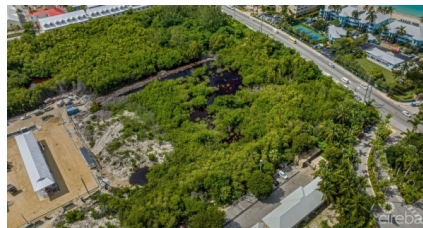


HOTEL/TOURISM DEVELOPMENT LAND SEVEN MILE BEACH CORRIDOR

Seven Mile Beach, Seven Mile Beach, Cayman Islands

MLS#: 416663

CI\$16,500,000



Discover an extraordinary opportunity in the heart of the Cayman Islands with this Exclusive Hotel/Tourism Development Land. Situated on the prestigious Seven Mile Beach Corridor, this prime property enjoys an enviable location adjacent to the world-renowned Ritz Carlton Hotel & Residences. Imagine owning land just steps away from the world-famous Seven Mile Beach, offering unrivaled beach proximity and a prestigious neighbor. With 350 feet of frontage on the West Bay Road and an additional 100 feet of road access on the bypass, this property ensures seamless accessibility for both guests and staff. Zoned Hotel Tourism, it allows for the creation of a 10-story masterpiece with 65 luxurious bedrooms, maximizing your investment potential. Not only is this property a logistical gem, but it also immerses your future guests in a vibrant and convenient environment. They'll have the pleasure of strolling to the finest restaurants and nightlife that the Cayman Islands have to offer. Additionally, the property's proximity to Caymana Bay, a bustling city center featuring cinemas, bookstores, gyms, boutiques, fine dining establishments, and wine bars, ensures entertainment and amenities are within easy reach. This development land is the last remaining piece on the Seven Mile Beach Corridor, making it an exclusive and sought-after opportunity in the region. Embrace this rare chance to create a remarkable destination that embodies an ethos - bold, ambitious, and authentically enriching the lives of those who live there. Your vision awaits realization in this vibrant and lucrative setting.

Essential Information

Type Land (For Sale)	Status Current	MLS 416663	Listing Type Commercial
--------------------------------	--------------------------	----------------------	-----------------------------------

Key Details

Width 350.00	Depth 435.00	Block & Parcel 12C,517 (SD)
------------------------	------------------------	---------------------------------------

Acreage
3.0000

Additional Fields

Block 12C	Parcel 517 (SD)	Views Inland
---------------------	---------------------------	------------------------