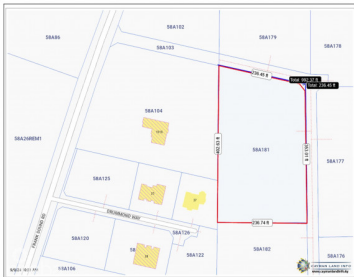


2 ACRES OFF FRANK SOUND ROAD

Midland East

MLS#: 418201

CI\$470,000



Ideal site for whatever you're thinking: subdivide it for house lots, build apartments, detached home, cottages OR keep this one for yourself and create the perfect place for your life! Plenty of room for a fabulous home, outdoor entertaining area, parking for cars and boats...room to roam and off the main Frank Sound Road for privacy and peace. Sitting at 4ft above sea level. Width of lot varies from 407 ft to 355 ft on each boundary. Call us and let's talk about options and making this one yours!

Essential Information

Type	Status	MLS	Listing Type
Land (For Sale)	Current	418201	Residential

Key Details

Width	Depth	Block & Parcel
236.00	375.00	58A,181
Acreage		
2.0000		

Additional Fields

Lot Size	Views	Zoning	Road Frontage
2	Garden View	Agriculture/Residential	236
Soil			
Other			