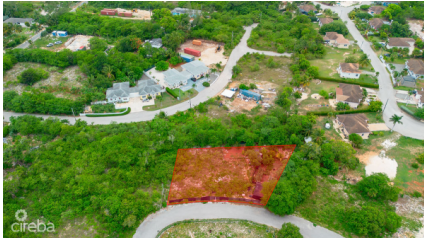


DUPLEX LOT - MAYFAIR CRESCENT - NORTHWARD. 0.2873 ACRE

Lower valley, Savannah & Bodden Town, Cayman Islands

MLS#: 419337

CI\$230,000



Located in the family-friendly community of Mayfair Crescent, Northward, this lovely 0.2873-acre lot offers the ideal setting for your dream home. Surrounded by lush greenery and the peaceful charm of a secluded neighborhood, it's the perfect escape from the bustle, while still keeping you connected to all the conveniences you need close by. Whether you're planning to build your forever home or invest in the future, this lot is an incredible opportunity. Build your dream. Live your legacy. Contact me today to learn more about this beautiful lot and to make it yours.

Essential Information

Type
Land (For Sale)

Status
Current

MLS
419337

Listing Type
Residential

Key Details

Width
133.00

Depth
116.00

Block & Parcel
37E,249

Acreage
0.2873

Additional Fields

Lot Size
0.29

Views
Garden View, Inland

Zoning
**Low Density
residential**

Road Frontage
100

Soil
Other