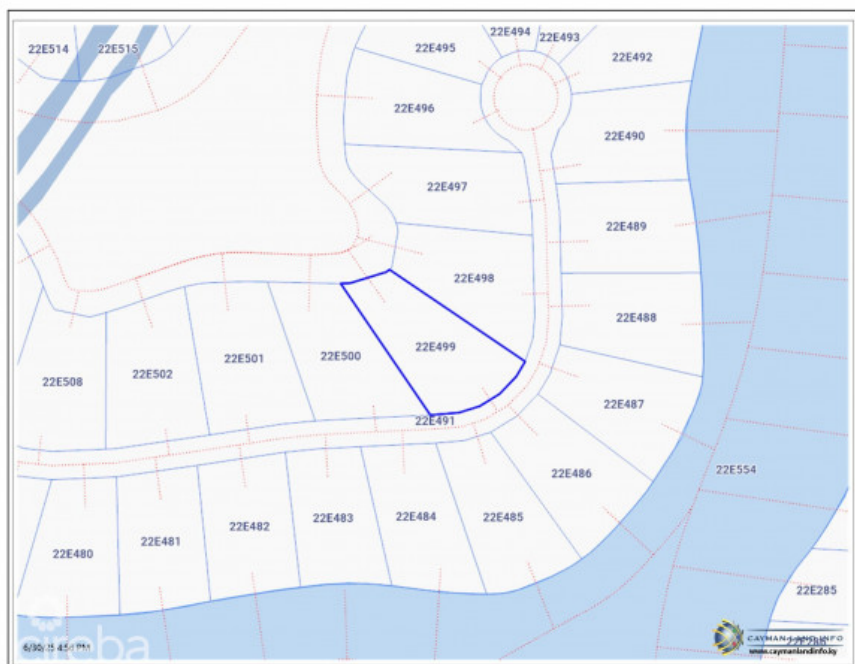
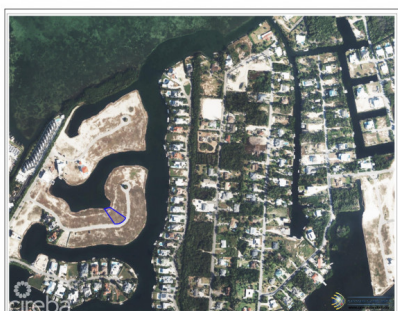


HARBOUR REACH .34 ACRES WATERFRONT PARCEL

Prospect, Grand Harbour, Red Bay & Prospect, Cayman Islands

MLS#: 419492

CI\$675,000



Nestled within an exclusive gated enclave, this extraordinary waterfront parcel presents a rare opportunity to craft your dream estate along pristine Caribbean shores. Spanning 0.3470 acres with 15,115 square feet of prime real estate, this spectacular lot offers direct access to the tranquil North Sound through its impressive 40-foot cantilevered boat dock and expertly engineered interlocking seawall. The property's commanding waterfront position provides unparalleled boating access, perfect for those who appreciate the finer aspects of island living. Whether you envision morning kayak adventures or sunset yacht excursions, this location delivers seamless connectivity to crystal-clear waters and endless aquatic possibilities. Distinguished by its prime location within a thoughtfully designed gated community, residents enjoy the security and elegance of beautifully landscaped entrance gates and professionally maintained common areas. The neighborhood's sophisticated atmosphere creates an ideal environment for discerning buyers seeking both privacy and prestige. Conveniently positioned near Harbour Walk's premium amenities, future homeowners will appreciate easy access to world-class dining, shopping, and recreational facilities. This strategic location offers the perfect balance of secluded waterfront tranquility and modern convenience. The lot's generous dimensions and waterfront orientation provide endless architectural possibilities, allowing visionary buyers to create a custom residence that maximizes both water views and outdoor entertaining spaces. With established infrastructure including the professional seawall and dock, this turnkey waterfront opportunity eliminates typical development challenges while preserving maximum creative flexibility for your future island sanctuary. Call to arrange your viewing of this extraordinary parcel today! Images courtesy of Cayman Land Info

Essential Information

Type	Status	MLS	Listing Type
Land (For Sale)	New	419492	Residential

Key Details

Width	Depth	Block & Parcel
85.00	186.00	22E,499
Acreage		
0.3470		

Additional Fields

Lot Size	Views	Zoning	Sea Frontage
0.35	Canal Front, Water Front	Low Density residential	57
Road Frontage	Soil		
125	Marl		