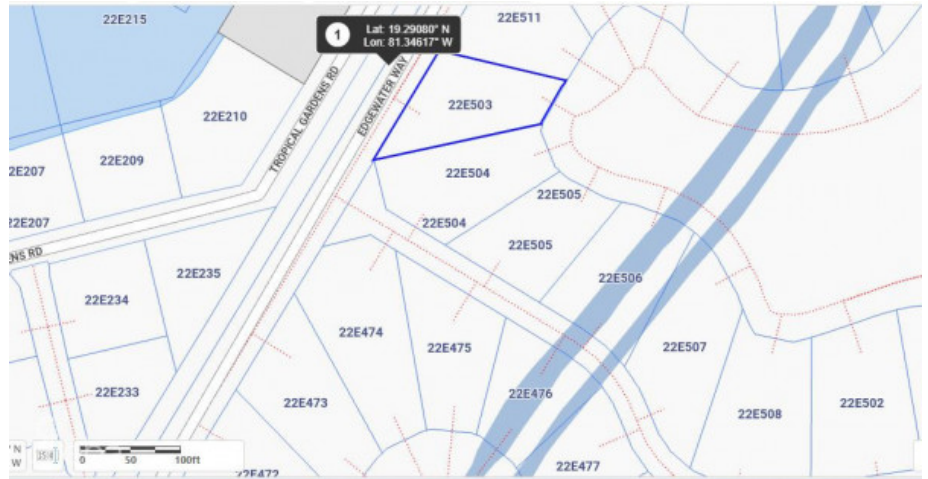


HARBOUR REACH

Prospect, Grand Harbour, Red Bay & Prospect, Cayman Islands

MLS#: 419227

CI\$695,000



Prime location, in a sought-after community on the canal, in a serene environment under CI 500K, sounds like paradise & It Is paradise. Canal view house lot in the prestigious Harbour Reach community in Grand Harbour. Harbour Reach is Canal lot community with direct access to the North Sound with a cantilevered 40 foot dock, this and these lots are all filled with compacted aggregate and safety retained by a keystone seawall which means there is no need for the added expense of pilings. Harbour Reach offers a 24-7 manned gatehouse with strong covenants to ensure high standards and quality upliftment of this beautifully landscaped community conveniently located within walking distance of Harbour Walk complex & Grand Harbour Shopping Complex with restaurants, café, Hurleys supermarket. Agent Owned

Essential Information

| | | | |
|-----------------|---------|--------|--------------|
| Type | Status | MLS | Listing Type |
| Land (For Sale) | Current | 419227 | Residential |

Key Details

| | | |
|---------|--------|----------------|
| Width | Depth | Block & Parcel |
| 95.00 | 135.00 | 22E,503A |
| Acreage | | |
| 0.2600 | | |

Additional Fields

| | | |
|----------|------------|-------------------------|
| Lot Size | Views | Zoning |
| 0.26 | Canal View | Low Density residential |

Property Features

| |
|--------------|
| Sea Frontage |
| Yes |