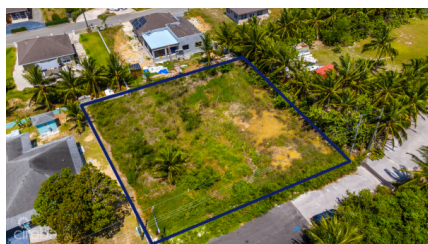


WOODLAND DRIVE, LOWER VALLEY LOT

Lower valley, Savannah & Bodden Town, Cayman Islands

MLS#: 419358

CI\$290,000



David Gordon
david@irg.ky

Don't miss this rare opportunity to own 0.45 acres on Woodlands Drive in Lower Valley—one of the last remaining lots in this well-established residential community. This generously sized parcel offers the ideal foundation for building a family home in a peaceful, sought-after neighborhood. While the land will require some fill to be fully developable, its location and potential make it a smart investment for homeowners or developers alike. Enjoy the benefits of a quiet residential setting with easy access to schools, shops, and other conveniences. With its great size and strategic location, this lot is the perfect canvas for creating your dream home.

Essential Information

Type
Land (For Sale)

Status
Current

MLS
419358

Listing Type
Residential

Key Details

| | | |
|---------|--------|----------------|
| Width | Depth | Block & Parcel |
| 175.00 | 150.00 | 32B,150 |
| Acreage | | |
| 0.4500 | | |

Additional Fields

| | | | |
|----------|-------------|-------------------------|-------|
| Lot Size | Views | Zoning | Soil |
| 0.45 | Garden View | Low Density residential | Other |