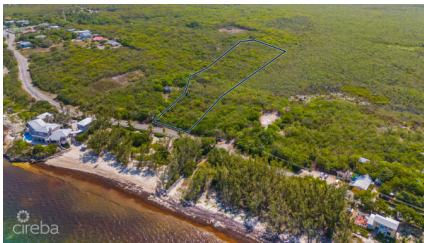


EAST END LAND - 3.25 ACRES

East End, East End & Colliers, Cayman Islands

MLS#: 419413

US\$830,000



David Gordon
david@irg.ky

3.25 Acres. Prime Development Land in East End, Grand Cayman
An exceptional opportunity awaits with this 3.25-acre parcel located in the serene and scenic East End of Grand Cayman. Whether you're a developer seeking your next project or an investor looking to secure land in one of the island's fastest-growing areas, this property offers outstanding potential.
Property Highlights: • Size: 3.25 acres • Location: Peaceful East End, known for its natural beauty and growing appeal • Investment Value: Strong long-term appreciation potential in a steadily expanding area • Access: Convenient road access and close to essential infrastructure • Surroundings: Near beaches, diving sites, restaurants, and local attractions This land presents a rare chance to invest in Grand Cayman's future while enjoying the quiet charm of the East End. Whether you build now or hold for capital growth, this is a smart move in a sought-after location.

Essential Information

| | | | |
|--------------------------------|--------------------------|----------------------|------------------------------------|
| Type Land (For Sale) | Status Reduced | MLS 419413 | Listing Type Residential |
|--------------------------------|--------------------------|----------------------|------------------------------------|

Key Details

| | | |
|------------------------|------------------------|----------------------------------|
| Width 170.00 | Depth 780.00 | Block & Parcel 75A,114 |
|------------------------|------------------------|----------------------------------|

Acreage
3.2500

Additional Fields

| | | | |
|-------------------------|-----------------------------|---|-----------------------------|
| Lot Size 3.25 | Views Garden View | Zoning High Density Residential | Road Frontage 125 |
|-------------------------|-----------------------------|---|-----------------------------|

Soil
Other