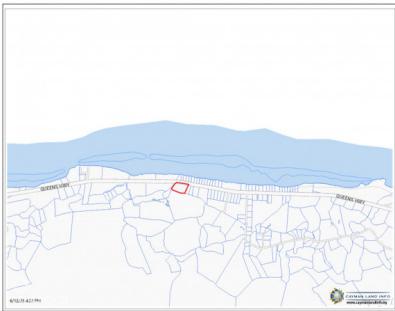
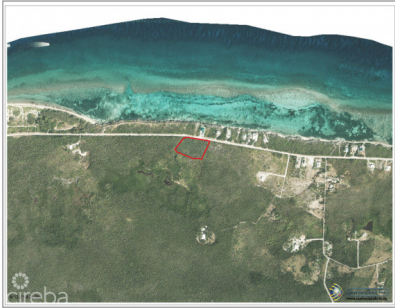


## QUEENS HIGHWAY HOUSE / DUPLEX LOT

N.E. Coast, East End & Colliers, Cayman Islands

MLS#: 419433

**CI\$185,000**



CK 69A, PARCELS 1, 2, & 84.



Welcome to Queens Highway. Located on the serene North East Coast of the Island, beach access within a short walking distance from this half acre roadside lot. This location is one of the most pristine and tranquil parts of the Cayman Islands, offering the perfect backdrop for your investment property, a luxurious getaway home, or the chance to design and build your ideal residence. A Hidden Gem on the East Coast This perfect piece of property is not just about location, it's about lifestyle. Situated near some of the island's most sought-after tourist attractions, such as the Crystal Caves and the Queen Elizabeth II Botanic Park, this area is a haven for nature lovers. Just a short drive away, you'll find Rum Point and Kaibo, offering quick and easy access to Stingray City, Starfish Point, and an array other water activity. Oversized Lot with Endless Possibilities This oversized lot at 0.46 acre is truly a rare find. Positioned between 24-28 ft above sea level. Whether you're looking to make a smart investment with a duplex or seeking the ideal plot to build your idealhome, this lot offers ample space and flexibility to accommodate your vision. For first-time buyers eager to jump on the property ladder, this is an unbeatable opportunity. A Sanctuary Close to Adventure Waking up every morning to the incredible sunrises and the tranquility of the North East Coast. Garland Estates provides the perfect balance of seclusion and accessibility. Whether you want to explore the island's natural wonders or simply relax in your own private sanctuary, this location delivers the best of both worlds. Secure Your Future on The Queens Highway Don't miss out on the opportunity to own a piece of paradise. Queens Highway offers convenience, and potential. Perfectly suited for investors, new homeowners, or those looking to create a bespoke living experience, this subdivision is your gateway to an unparalleled island lifestyle. Contact today to find out more about this fantastic lot and how you can secure your own slice of paradise. How do you want to live your life?

## Essential Information

Type  
**Land (For Sale)**

Status  
**Pen/Con**

MLS  
**419433**

Listing Type  
**Residential**

## Key Details

Width	Depth	Block & Parcel
<b>89.00</b>	<b>235.00</b>	<b>69A,84L1</b>
Acreage		
<b>0.4600</b>		

## Additional Fields

Lot Size	Views	Zoning
<b>0.46</b>	<b>Garden View, Ocean View</b>	<b>Low Density residential</b>

## Property Features

Road Frontage
<b>Yes</b>