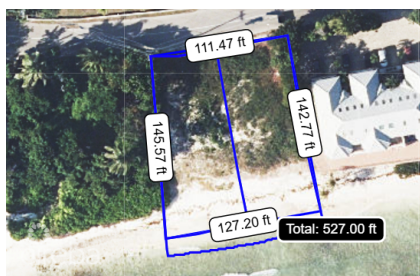
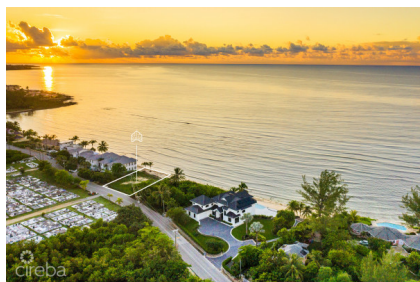


## OLD PROSPECT ROAD BEACHFRONT LAND 0.39 ACRES

Prospect, Grand Harbour, Red Bay & Prospect, Cayman Islands

MLS#: 419993

**US\$2,700,000**



Discover an exceptional oceanfront opportunity on Old Prospect Road, where two adjacent parcels totalling 0.39 acres offer the rare chance to create a sophisticated estate in one of Grand Cayman's most exclusive residential enclaves. This pristine oceanfront property offers 127 feet of protected reef frontage along a white sandy beach, elevated on a natural ridge to capture breathtaking views of the Caribbean Sea, whilst also ensuring natural protection. The substantial land area provides the perfect canvas for an exceptional build, whether a grand single-family residence, or a multi-generational family home. The surrounding neighbourhood is characterised by distinguished homes and a family-friendly atmosphere, with a top Montessori school nearby. With generous space for expansive gardens, a pool area, and outdoor living spaces, this property offers the privacy and flexibility to design a truly bespoke island home that reflects your vision of luxury Caribbean living. This is an incomparable chance to own one of the finest remaining oceanfront parcels in the Cayman Islands, offering the space, elevation, and setting to build an extraordinary oceanfront home of lasting value

## Essential Information

|                 |         |        |              |
|-----------------|---------|--------|--------------|
| Type            | Status  | MLS    | Listing Type |
| Land (For Sale) | Current | 419993 | Residential  |

## Key Details

|         |        |                |
|---------|--------|----------------|
| Width   | Depth  | Block & Parcel |
| 127.00  | 146.00 | 23C,225/226    |
| Acreage |        |                |
| 0.3900  |        |                |

## Additional Fields

|               |             |                         |              |
|---------------|-------------|-------------------------|--------------|
| Lot Size      | Views       | Zoning                  | Sea Frontage |
| 0.39          | Beach Front | Low Density residential | 127          |
| Road Frontage | Soil        |                         |              |
| 111           | Sand        |                         |              |