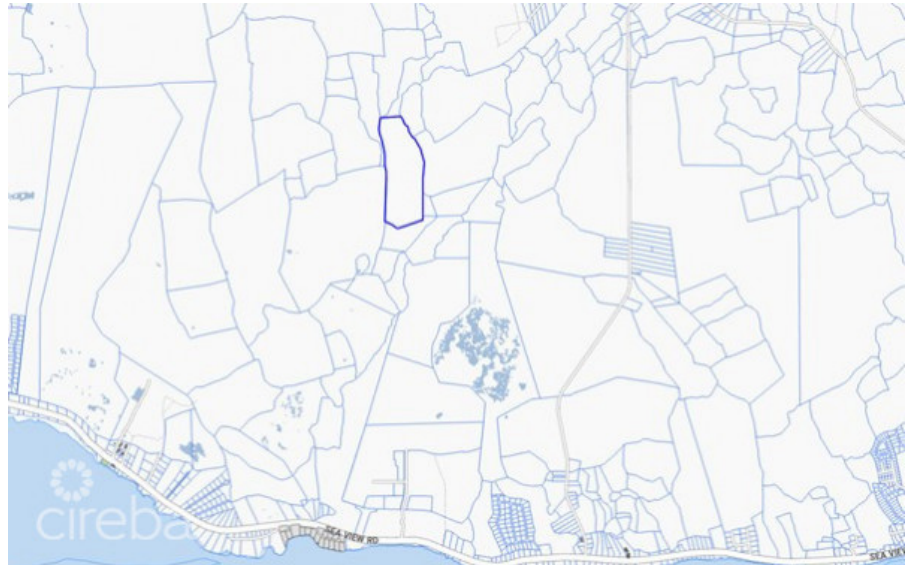


## 34 ACRES EAST END

East Interior, East Interior, Cayman Islands

MLS#: 420729

**CI\$3,927,000**



Positioned in the heart of East End, this remarkable 34-acre parcel presents a rare chance to secure a substantial tract of land in one of Cayman's most up-and-coming areas. With a 30-foot road access already paid for and supporting documentation in place, much of the heavy lifting has been done—offering a clear path for future development. This is truly a developer's dream, with ample space and flexibility to bring a wide range of visions to life. Whether you're considering a residential community, private estate, or a long-term investment hold, the possibilities here are endless. The land also lends itself exceptionally well to farming or agricultural use, making it equally attractive for those seeking a more sustainable or income-producing venture. Large parcels with this level of potential, accessibility, and value—just under \$4 million—are becoming increasingly hard to find in East End. An opportunity like this doesn't come around often.

### Essential Information

Type  
**Land (For Sale)**

Status  
**Current**

MLS  
**420729**

Listing Type  
**Commercial**

## Key Details

Width  
**755.79**

Depth  
**2166.72**

Block & Parcel  
**63A,47**

Acreage  
**34.0000**

## Additional Fields

Block  
**63A**

Parcel  
**47**

Views  
**Inland**