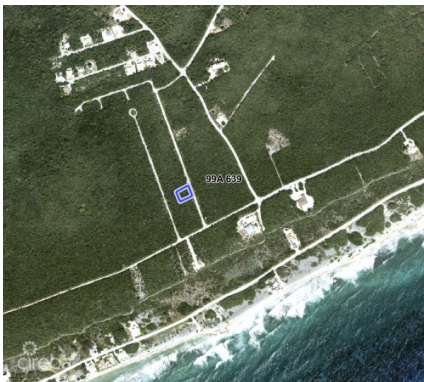


## PREMIUM ELEVATED LOT IN THE HEART OF CAYMAN BRAC

Cayman Brac Center, Cayman Brac, Cayman Islands

MLS#: 420699

**CI\$62,000**



Parcel 99A639 is a beautifully positioned 0.28-acre residential lot located within the emerging Isabela Estates community on the Cayman Brac Bluff. With strong elevation, ready-to-install utilities, and superior road access, this parcel offers a rare combination of safety, convenience, and long-term value. This is an ideal opportunity for a future home, a long-term investment, or a generational landholding in one of the island’s most stable and desirable interior zones. ✓ Elevated & Secure • 38 feet above sea level • Naturally hurricane-resilient • Solid limestone foundation ideal for construction ✓ Build-Ready Infrastructure • Electrical Utility: Fully paid and ready for immediate installation. • Chip & spray surfaced road (superior to marl) • Two road access points into the estate ✓ Ideal Central Location • 1500 ft from the sea • 1 mile from Le Soleil D’or Hotel • Quiet, private, and elevated • Minutes from airport, grocery, schools, and medical services ✓ Strong Investment Profile • Located in a growing residential corridor • Elevated land continues to appreciate faster than coastal interior lots • Perfect for long-term holding or immediate development Parcel 99A639 is ready for transfer and development. Whether you’re building a home or securing land for the future, this lot offers unmatched value at this price point.

## Essential Information

Type <b>Land (For Sale)</b>	Status <b>New</b>	MLS <b>420699</b>	Listing Type <b>Residential</b>
--------------------------------	----------------------	----------------------	------------------------------------

## Key Details

Width <b>127.00</b>	Depth <b>112.00</b>	Block & Parcel <b>99A,639</b>
------------------------	------------------------	----------------------------------

Acreage  
**0.2800**

## Additional Fields

Lot Size <b>0.28</b>	Views <b>Garden View</b>	Road Frontage <b>112</b>
-------------------------	-----------------------------	-----------------------------