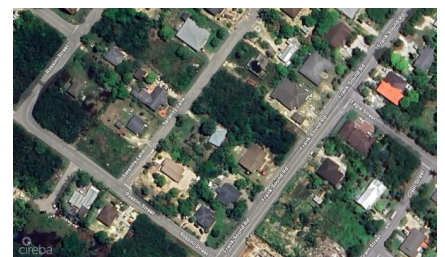


NORTH SIDE DEVELOPMENT LOT WITH PARTIAL CONSTRUCTION & PLANS

Midland East

MLS#: 420913

CI\$299,000



This property features a cleared, levelled lot in a quiet residential neighbourhood, offering a prime foundation for a residential project. The land has fertile soil with mature fruit trees, ready for landscaping and gardening. Agent owned. Structure Details: The site includes a partially constructed two-story residence designed to reach 2,663 sq. ft. upon completion. Significant structural work has been finalised, including:

- Reinforced foundation
- Structural framing for both floors
- Staircase installation

This property provides a substantial head start on development, with the primary structural components already in place.

Essential Information

Type Land (For Sale)	Status New	MLS 420913	Listing Type Residential
--------------------------------	----------------------	----------------------	------------------------------------

Key Details

Width 102.00	Depth 102.00	Block & Parcel 54D,93
------------------------	------------------------	---------------------------------

Acreage
0.2400

Additional Fields

Lot Size 0.24	Views Garden View	Zoning Low Density residential	Soil Black
-------------------------	-----------------------------	--	----------------------

Property Features

Road Frontage
Yes