

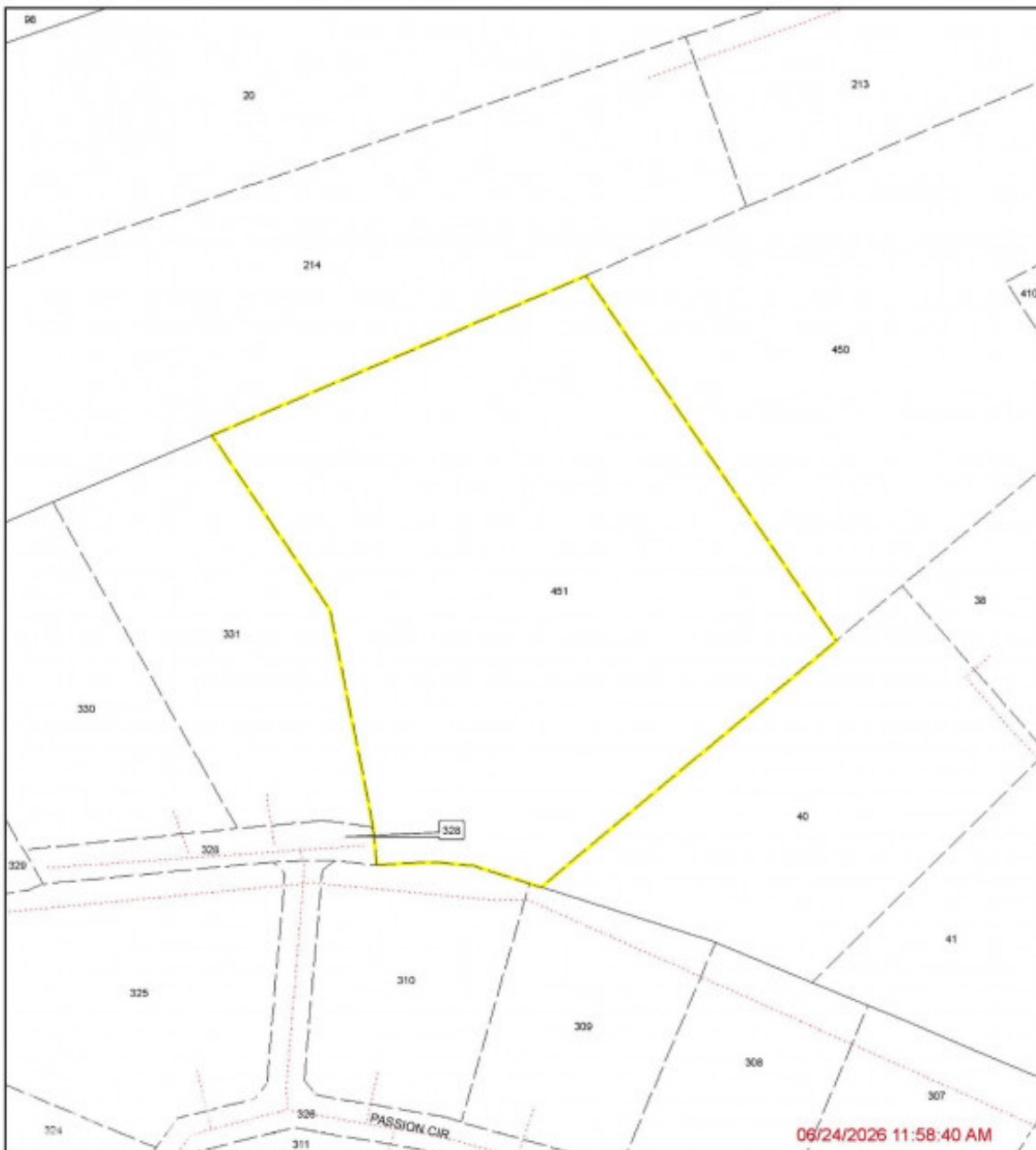
3.235-ACRE DEVELOPMENT PARCEL WITH OPERATIONAL FARM

Bodden Town, Savannah & Bodden Town, Cayman Islands

MLS#: 420980

CI\$1,575,000

REGISTRY MAP EXTRACT
SECTION : BODDEN TOWN
Block/Parcel(s) : '43E 451'
CAYMAN LAND INFO
Last Mutation Date: 27/3/2026
Registry Map Extracts must be printed to fit a paper size of 8.5" x 11" in order to retain a scale of 1:1,260
Lands and Survey Department © Cayman Islands Government. All Rights Reserved.
Reproduction in whole or in part by any means is prohibited without prior written permission from the Lands & Survey Department.
Lands & Survey Department, P.O. Box 130, Grand Cayman KY1-9000, Cayman Islands. Tel: 1 (345) 244-3420 | Web: www.caymanlandinfo.ky



Excellent opportunity for residential or agricultural development, with the added benefit of a fully operational, income-generating egg farm already in place. Zoned Agriculture/Residential, the property offers flexibility for a buyer looking to subdivide, build out, or hold for future development. The land is partially treed and includes registered road access. Well-positioned to benefit from the planned East-West Arterial expansion (Phases 2 & 3), which will significantly improve connectivity to George Town and the wider island. A rare opportunity to secure a significant parcel in a rapidly evolving corridor with a fully operational farm as an added advantage.

Essential Information

Type Land (For Sale)	Status New	MLS 420980	Listing Type Residential
--------------------------------	----------------------	----------------------	------------------------------------

Key Details

Width 397.00	Depth 350.00	Block & Parcel 43E,451
------------------------	------------------------	----------------------------------

Acreage
3.2350

Additional Fields

Lot Size 3.23	Views None	Zoning Agriculture/Residential
-------------------------	----------------------	--