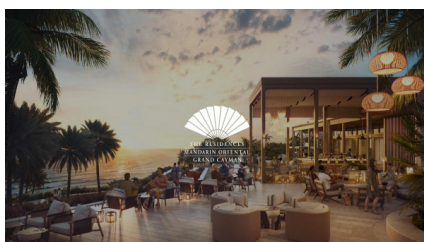
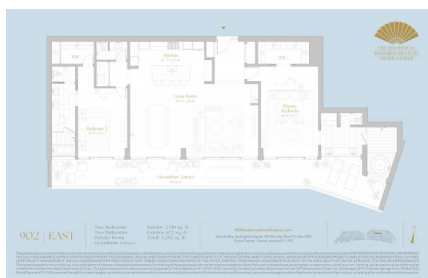


The Residences Mandarin Oriental Grand Cayman

Lower valley, Savannah & Bodden Town, Cayman Islands

MLS#: 413864

US\$5,250,000





James O'Brien
james@irg.ky

9th floor two-bedroom, two and one-half baths Residence centered in the East Tower features 2,581 sqft of interior living area and 672 sqft of oceanfront terrace, overlooking the Lagoon Pool, Beach Grill and beach beyond. Its unique lateral layout provides direct ocean views from all major rooms. An entry foyer opens onto the great room living/dining area with wet bar. Elevated ten-foot ceilings frame floor-to ceiling retractable glass opening onto the terrace. The large, open gourmet kitchen with seating bar features custom mill work cabinetry, Calacatta counter tops and back splashes with Wolf, Sub-Zero and Gaggenau appliances. The large primary bedroom with 5-fixture bathroom includes a windowed circular soaking tub and shower room with ocean views. Its spacious secondary bedroom suite also features a 5-fixture bathroom with windowed soaking tub and shower area. Bathrooms are appointed in a selection of natural stones including Travertine and Clef Cut Limestone. Seven-inch-wide Grey Oak flooring is hand-laid throughout the interior, seamlessly integrating with the Grey Wood Plank Porcelain tiling the outdoor terrace.

Essential Information

Type	Status	MLS	Listing Type
Residential (For Sale)	Withdrawn	413864	Condos

Key Details

Bed	Bath	Block & Parcel	Year Built
2	2.5	32D,122UNIT902	2024

Additional Fields

Views	Foundation	Stories/Condo	Floor Level
Beach Front	Slab	1	9
Occupant	Construction	Class	Land Certificate
Owner	Concrete	Under Construction	Issued
Possession	Sea Frontage	Air Conditioning	Porch
At Completion	700	Central	Unscreened
How Shown			
By Appointment/List			

Property Features

City water	Pool	Tennis Courts	Washer/Dryer
Yes	Yes	Yes	Yes

Kitchen
Yes

Family Room
Yes

Dining Area
Yes

Breakfast
Yes

Utility
Yes

Living Room
Yes

Refrigerator
Yes

Dishwasher
Yes

Disposal
Yes

Microwave
Yes