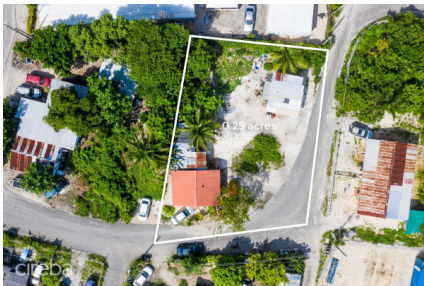


AUTUMN LANE GEORGE TOWN COMMERCIAL LOT

George Town Central, George Town, Cayman Islands

MLS#: 415067

CI\$980,000



A 0.25 acre commercial land lot in the heart of George Town. Located on Autumn Lane, just off Bodden Road, this parcel is within walking distance to the waterfront and the downtown business district. It offers an excellent opportunity for development into a variety of commercial businesses. Zoning allows for retail shops, banks, health care services, professional and legal services (such as accounting or real estate), supermarkets, motor vehicle sales, recreational facilities, restaurants, bars, gas stations and auto repair. Full of possibility, this Autumn Lane parcel is a fantastic commercial investment.

Essential Information

Type Land (For Sale)	Status Current	MLS 415067	Listing Type Commercial
--------------------------------	--------------------------	----------------------	-----------------------------------

Key Details

Width 121.00	Depth 100.00	Block & Parcel 13EH,82
------------------------	------------------------	----------------------------------

Acreage
0.2500

Additional Fields

Block 13EH	Parcel 82	Views Inland	Zoning Commercial
----------------------	---------------------	------------------------	-----------------------------

Road Frontage 196	Soil Other
-----------------------------	----------------------