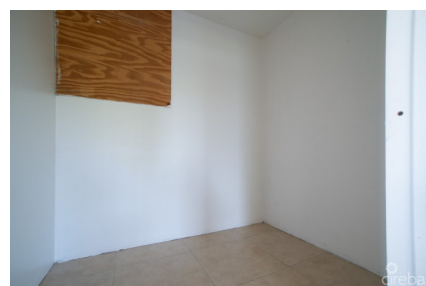
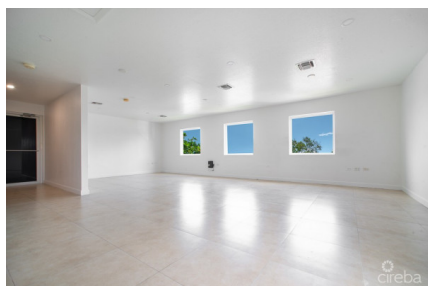


#4 PALM GROVE COMMERCIAL SPACE

George Town South, George Town, Cayman Islands

MLS#: 416019

CI\$425,000



GREAT COMMERCIAL INVESTMENT OPPORTUNITY - CENTRAL GT LOCATION This is a tremendous opportunity to own a commercial space in an absolutely prime location in central George Town. Palm Grove is situated on a major 4-way intersection and therefore benefits from very high commercial visibility . The building is low density (6 units in total) and is built like a fortress with excellent building integrity and has hurricane rated windows and doors. This unit offers just under 800 sq. ft of prime commercial space and is conveniently situated on the first floor. The unit has its own private bathroom, and a drop tile ceiling to accommodate your tenant's IT needs. The building was renovated last year, is energy efficient and benefits from solar panels which are part of the CUC CORE agreement. During the building renovation, the entrance corridor was enclosed, air conditioned and sound proofing was added, so although the building is on a busy intersection ,your tenants are protected from road and aircraft noise. Just 2 minutes from the hospitals, Cricket Square and George Town's commercial hub, this super commercial building is wheelchair accessible, has an elevator and ample parking. It is a well-run building with reasonable strata fees. If you are looking for a great commercial investment property close to all conveniences of central George Town, then look no further. This unit is currently tenanted and provides a good rental Return on Investment, but you could also anticipate excellent capital appreciation on the asset in the future, due to the central location.

Essential Information

Type	Status	MLS	Listing Type
Commercial (For Sale)	Current	416019	Commercial

Key Details

Block & Parcel	Acreage	Year Built
14D,65H4	0.3484	2011

Additional Fields

Lot Size
0.35

Views
Inland

Foundation
Slab

Zoning
Commercial

Road Frontage
230