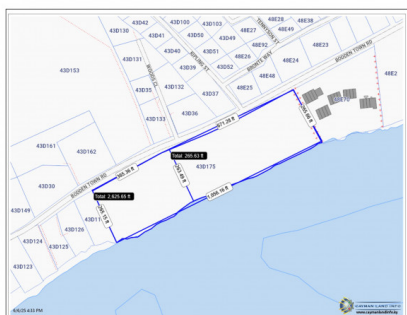
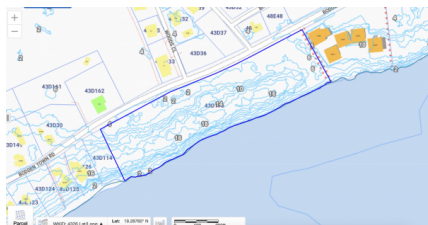


Exceptional Oceanfront Development Opportunity ---6.4 Acres Bodden Town Rd

Bodden Town, Savannah & Bodden Town, Cayman Islands

MLS#: 419456

CI\$6,450,000





Trisha Johnson
trisha@irg.ky

For Visionary Developers, Dreamers, and Legacy Landholders – The Ultimate Canvas for Your Grandest Ambitions. An exceptional development opportunity on Grand Cayman’s sought-after southern coast: this 6.4-acre oceanfront parcel offers 1,056 feet of Caribbean Sea frontage, with diverse topography ranging from a tranquil sandy beach to dramatic 18-foot ironshore elevations. Zoned Hotel/Tourism, the property comes with conditional planning approval for a 157-unit apartment development, including a pool and cabanas, thoughtfully designed to be built across three phases. For visionary investors or boutique developers, there is also the alternative option to subdivide into 10 exclusive estate parcels, each approximately 0.64 acres—ideal for luxury private villas or a branded residential enclave. Key Features: ~6.4 acres of prime oceanfront land ~1,056 ft of Caribbean Sea frontage ~Zoned Hotel/Tourism with conditional planning approval for 157 apartments ~Pool, cabanas, and phased development potential ~Option to subdivide into 10 luxury estate lots ~Elevated terrain from beach to ironshore ~Ideal for resort, branded villas, or multigenerational retreat Located just 18 minutes from Owen Roberts International Airport and in close proximity to the proposed East West Bypass, this site seamlessly combines accessibility, natural beauty, and development scale—ideal for visionary investors seeking legacy impact and strong ROI in one of the Caribbean’s most stable and desirable markets.

Essential Information

Type	Status	MLS	Listing Type
Land (For Sale)	Current	419456	Commercial

Key Details

Width	Depth	Block & Parcel
1056.00	265.00	43D,175
Acreage		
6.4000		

Additional Fields

Block	Parcel	Views	Zoning
43D	175	Ocean View, Ocean Front	Hotel/Tourism
Land Certificate	Possession	Frontage Road	Trees
Not Issued	At Closing	City Maintained	Heavily Wooded
Sea Frontage	Road Frontage	Road Surface	Topography
1056	1036	Asphalt	Unknown

How Shown
Drive by

Soil
Sand